

Price and Prejudice: Housing Rents Reveal Racial Animus

Marius Brühlhart, Gian-Paolo Klinke, Andrea Marcucci, Dominic Rohner, Mathias Thoenig

Impressum:

CESifo Working Papers

ISSN 2364-1428 (electronic version)

Publisher and distributor: Munich Society for the Promotion of Economic Research - CESifo GmbH

The international platform of Ludwigs-Maximilians University's Center for Economic Studies and the ifo Institute

Poschingerstr. 5, 81679 Munich, Germany

Telephone +49 (0)89 2180-2740, Telefax +49 (0)89 2180-17845, email office@cesifo.de

Editor: Clemens Fuest

<https://www.cesifo.org/en/wp>

An electronic version of the paper may be downloaded

- from the SSRN website: www.SSRN.com
- from the RePEc website: www.RePEc.org
- from the CESifo website: <https://www.cesifo.org/en/wp>

Price and Prejudice: Housing Rents Reveal Racial Animus

Abstract

We study market rents in the neighborhood of asylum seeker hosting centers. Our empirical setting exploits the quasi-random opening of centers and spatial allocation of asylum seekers in Switzerland. Rents within 0.7km of an active center are found on average to be 3.8% lower than rents in the control group. The price drop is more pronounced when centers host a higher share of asylum seekers from Sub-Saharan countries. In contrast, neither the religious affiliation of asylum seekers nor their inferred crime propensity affect prices significantly. Our findings are consistent with racial animus as the dominant driver of observed market outcomes.

JEL-Codes: D900, J150, R310.

Keywords: ethnic prejudice, willingness to pay, housing prices, refugee centers.

Marius Brühlhart
University of Lausanne / Switzerland
Marius.Brulhart@unil.ch

Gian-Paolo Klinke
Swiss Federal Statistic Office
Neuchâtel / Switzerland
Gian-Paolo.Klinke@bfs.admin.ch

Andrea Marcucci
University of Lausanne / Switzerland
Andrea.Marcucci@unil.ch

Dominic Rohner
University of Lausanne / Switzerland
Dominic.Rohner@unil.ch

Mathias Thoenig
University of Lausanne / Switzerland
Mathias.Thoenig@unil.ch

March 1, 2023

We thank Mathieu Couttenier and seminar participants at the Universities of Bern, Padua and Lausanne for helpful comments. We are grateful to several cantonal administrations for providing information on asylum-seeker hosting centers. Valentin Mueller provided excellent research assistance.

Introduction

Xenophobia and discrimination are global social challenges. While voluntary international migration is economically efficient, it may give rise to political backlash, especially among host societies. For example in the United Kingdom, survey respondents systematically named immigration as the country's most important issue in the run-up to the Brexit vote in 2016 (Blinder and Richards, 2016). Similar patterns can be observed across the continent: in a recent cross-country poll, 34 percent of Europeans stated immigration as the most important issue facing the EU, considerably ahead of the second-ranked item, climate change, stated by 24 percent of respondents (Eurobarometer, 2019). In the United States, immigration and/or race relations have featured among the top four most important problems according to nationwide polls every year between 2015 and 2022 (Brenan, 2022).¹

The reasons for anti-migrant sentiment can be manifold. One factor may be the perception that migrants are competing against natives in labor and housing markets. The resulting distributional conflict can be exacerbated by non-economic animus against people of different nationality or ethnicity. That such prejudice exists has been amply documented through laboratory experiments, field experiments and observational studies.²

Yet, not everybody is prejudiced. In a population of heterogeneous types, it is uncertain *a priori* whether and how much prejudice will matter at the aggregate level. Models of labor market discrimination, for example, show that non-prejudiced employers will arbitrage away the biases of prejudiced employers, so that prejudice may not affect the aggregate market outcome (Becker, 1957; Heckman, 1998). In the presence of market frictions, however, arbitrage will be incomplete, and discriminatory preferences will to some extent be reflected in market prices (Black, 1995). Moreover, prejudice has been shown to be a rather weakly held preference. People who express prejudiced opinions in unincentivized surveys or in choices among otherwise equivalent alternatives may not act on their prejudice when discrimination incurs a cost. In an incentivized field experiment, Hedegaard and Tyran (2018) have found that the probability of ethnically discriminating falls by 9 percent for every 10 percent rise in the price of doing so. For both those reasons – coexistence of unequally prejudiced agents, and cost sensitivity of discriminatory behavior – real-world market outcomes could conceivably reveal no discrimination even if a nonzero share of market participants hold preferences that are consistent with prejudice in weakly incentivized settings.

Our aim is to measure such an aggregate-level equilibrium outcome in a market with the likely presence of prejudiced agents. For this, we need to be able to observe actual market prices in a setting that features measurable and plausibly exogenous changes in the scope for ethnic discrimination. Our approach is to track the evolution of housing prices in the

¹Victims of discrimination and prejudice are diverse, but one group that has often been a target – in their origin as well as in their host country – are asylum seekers. Unsurprisingly, this population group has been found to suffer disproportionately from trauma and anxiety. As documented in Abbott (2016), for example, refugee migrants in Sweden have a three to four times greater hazard of suffering from psychoses than the Swedish born population. While psychological suffering may to an extent stem from war exposure and political persecution, also the asylum process and treatment in the host location plays a significant role (see Laban, Gernaat, Komproe, Schreuders and De Jong, 2004). One adverse effect of a lengthy asylum process is to harm employment prospects of refugees (Hainmueller, Hangartner and Lawrence, 2016).

²See Neumark (2018) and Lang and Kahn-Lang Spitzer (2020) for recent surveys.

neighborhood of state-run asylum seeker hosting centers (henceforth “asylum centers”). The opening of such a center typically represents a salient and quantitatively relevant increase in the local-level population of foreign origin. Asylum seekers, however, do not have access to local labor and housing markets, which means that they do not compete directly with residents. Hence, any resulting changes in local property prices plausibly reflect the market equilibrium outcome determined by prejudiced and non-prejudiced natives. Moreover, center openings are driven by determinants outside the affected local community and are thus largely exogenous with respect to local conditions. Housing price movements in the vicinity of asylum centers therefore offer us a measure of the equilibrium market response to immigration. A unique feature of our research design is that data on compositional differences in the populations of asylum centers also allow us to explore market reactions to different immigrant types.

Specifically, our analysis draws on geo-coded data for (a) the universe of public residential rental postings in Switzerland and (b) the opening, closing and populations of asylum centers over the 2004-2014 period. We estimate the effect of non-vacant centers on local rental prices applying a comprehensive set of fixed effects to filter out time-invariant confounders. The identifying variation we consider stems from changes around the opening and closing of asylum centers, comparing housing units within the same neighborhood but located at different distances from the center.

We find that the opening of a center is on average associated with a drop of 3.8% in rental prices in close proximity to the center. This effect emerges immediately after the opening of a center and persists for at least two years after the opening. To investigate the underlying mechanisms, we exploit the quasi-random allocation of asylum seekers across centers, implying exogenous differences in the nationality composition of different centers. We find that the drop in local rental prices is significantly larger in the vicinity of centers populated by above-median shares of asylum seekers from Sub-Saharan Africa. This result persists when controlling for crime-related variables, suggesting that the drops in rental prices are indeed due to prejudice (or “taste-based” discrimination) rather than to “statistical” discrimination.

These findings are quantitatively sizeable (as discussed below) and policy relevant. If housing price drops had merely reflected statistical discrimination, by pricing in higher local crime rates, then a natural policy conclusion would have been to step up local policing. However, given that the price drops do not appear to be driven by greater criminality, it turns out that policies to combat discrimination are rather located in the realm of championing public education. In the same vein, we observe somewhat lower rental price effects in subsamples of municipalities with higher education levels. This leaves us with a hopeful message: it may take time and education to tackle xenophobia and prejudice, but education looks like a feasible path towards greater tolerance.

This paper is related to several strands of existing research. First of all, we contribute to an empirical literature studying discrimination of ethnic minorities in various contexts, such as the labor market (Lang and Lehmann, 2012; Agan and Starr, 2018; Neumark, 2018; Hangartner, Kopp and Siegenthaler, 2021), the housing market (Yinger, 1986; Ewens, Tomlin and Wang, 2014; Laouénan and Rathelot, 2022), citizenship applications (Hainmueller and

Hangartner, 2013), or criminal justice (Lang and Kahn-Lang Spitzer, 2020). With regard to asylum seekers, there is evidence from a large non-incentivized survey that asylum seekers with greater employability, more consistent asylum testimonies, severe vulnerabilities and of Christian (rather than Muslim) faith are met with greater public acceptance in European host countries (Bansak, Hainmueller and Hangartner, 2016).

Methodologically, we follow the hedonic pricing approach, using housing rents to infer willingness to pay. This method has in the past been used to gauge the impact of environmental factors (Chay and Greenstone, 2005; Currie, Davis, Greenstone and Walker, 2015), riots (Collins and Margo, 2007), armed conflict (Besley and Mueller, 2012), store locations (Pope and Pope, 2015), and crime (Linden and Rockoff, 2008; Pope, 2008*b*; Congdon-Hohman, 2013). In contrast to our approach, most prior studies use prices (rather than rents) with the idea of quantifying the capitalized effect of *permanent* disamenities (e.g. road infrastructure, airport, etc.). In our context, using rents is more appropriate given the transitory nature of the amenity shocks we are interested in and the fact that rents respond to market conditions more quickly than housing prices (Rosen and Smith, 1983). Indeed, we look not only at short-lived openings of asylum centers but also at their ethnic composition, which varies over time – often from one month to another.³

Three papers are closely related to ours. Van Vuuren, Kjellander and Nilsson (2019) study how proximity to temporary housing for refugees affects rents in Gothenburg (Sweden), and Daams, Proietti and Veneri (2019) investigate how the opening of asylum seeker reception centers impacts housing prices in the Netherlands. Both studies find the opening of asylum centers to be associated with a significant drop in neighboring housing prices. Myohl and Stadelmann (2020) study native residents' decision to resettle after asylum center openings in Switzerland.

What sets our paper apart is that we draw on newly assembled, very fine-grained data on the asylum center nationality composition and on local and group-specific crime rates, which enables us to investigate the channels of transmissions of any price effects of center presence. In contrast, the aforementioned existing studies do not have information on the ethnic composition of center populations. Another asset of our study is the fact that our data spans various regions of a whole country (Switzerland), rather than just one urban area (Gothenburg in the case of Van Vuuren et al., 2019), and that we can draw on rental prices rather than sales prices.

The rest of the paper is organized as follows: Section 1 describes the method and data, Section 2 displays the main results, and Section 3 concludes. The Appendix contains further context and data description and additional robustness checks.

³Further related literatures study the impact of asylum seeker arrival on crime (Bianchi, Buonanno and Pinotti, 2012; Bell, Fasani and Machin, 2013; Couttenier, Petrencu, Rohner and Thoenig, 2019), on right-wing voting (Otto and Steinhardt, 2014; Barone, D'Ignazio, De Blasio and Naticchioni, 2016; Steinmayr, 2016; Dustmann, Vasiljeva and Piil Damm, 2019) and on policy preferences (Zimmermann and Stutzer, 2022). For another literature linking the population composition to urban outcomes, see Eberle, Henderson, Rohner and Schmidheiny (2020).

1 Method and Data

1.1 Estimation

We estimate the effect of asylum centers on local rental prices using a difference-in-differences strategy, where housing units located near an asylum center (treatment group) are compared to units located further away (control group), before and after the opening or closing of the center. In order to contrast housing units, h , that are comparable in terms of local economic and topographic characteristics, we only consider properties within a two-kilometer radius of asylum centers, and we include fixed effects for the closest asylum center, c . Our identification relies on comparing houses across distance bands in the vicinity of a particular center before and after its opening or, less frequently, closure. Moreover, we control for a vector of housing characteristics, \mathbf{H}_h , a vector of year fixed effects, $\tau_{y[t]}$, and a vector of municipality fixed effects, γ_m . Formally we estimate the following equation:

$$\ln(Rent)_{hcm t} = \alpha + \beta(Active_{ct} \times Dist_{hc}) + \mathbf{H}'_h \boldsymbol{\Gamma} + \theta_c(Center_c \times Active_{ct}) + \delta_c(Center_c \times Dist_{hc}) + \tau_{y[t]} + \gamma_m + \varepsilon_{hcm t}, \quad (1)$$

where the dependent variable is the natural logarithm of the rental price per square meter in an advertisement for housing unit h , assigned to asylum center c , located in municipality m , and published on day t . The binary variable $Active_{ct}$ is equal to 1 if the center c assigned to property h is open at time t when the property advert is recorded. The binary variable $Dist_{hc}$ is equal to 1 if property h is within a radius of 709m from its closest center c (this threshold is algorithm-driven, as detailed below).

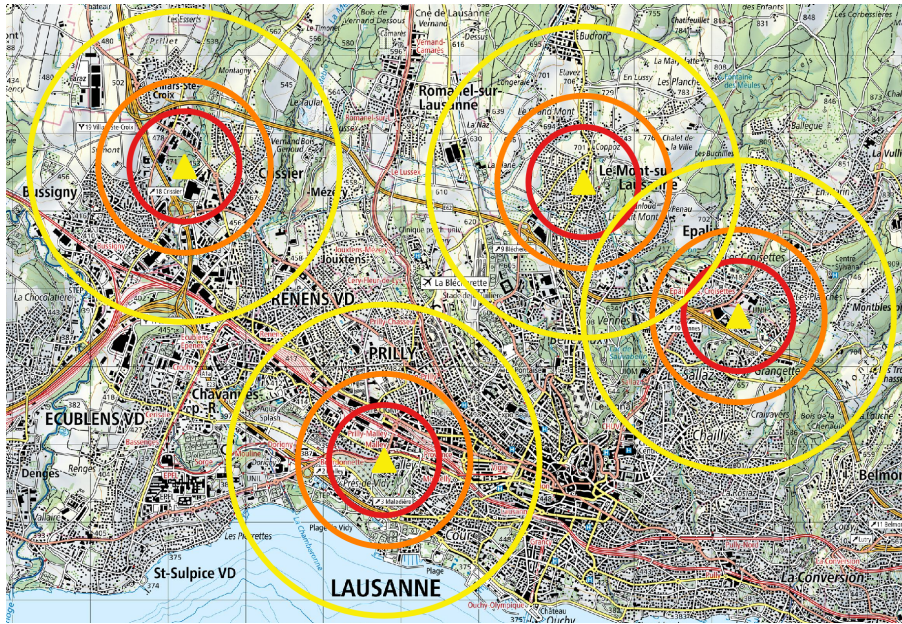
Notice that, given the fixed-effects structure of our model, we exploit only within-center variation to estimate β , our parameter of interest.⁴ This approach is important for two reasons. First, it allows us to contrast housing units located in comparable neighborhoods. Second, it reduces the concern that the “forbidden-comparisons” typical of staggered settings between already treated and newly treated units could bias our coefficients (e.g. Borusyak, Jaravel and Spiess, 2021). To further ease this concern we present a replication of our main estimates using an alternative stacked regression specification technique in Appendix A.3.

Our treatment and control groups are illustrated in Figure 1. Yellow rings show the 2-kilometer circles around asylum centers which delineate our estimation sample. Treated housing units are those located within the red rings. Properties located between the red and the orange circles are excluded from the sample in order to avoid capturing spillover effects.⁵ Moreover, we drop from the sample housing units located at the same time within the treated (red) ring of a center and the treatment (red) or spillover (orange) ring of their second closest center, in order to avoid contamination of the estimated effects by centers’ opening and closing at different points in time.

⁴This is due to the inclusion of the binary interaction terms $Center_c \times Active_{ct}$ and $Center_c \times Dist_{hc}$.

⁵We can think of two kinds of spillover effects. One is the negative effect on housing rents that might propagate further away than our treatment radius, as Figure 2a suggests. The second type of spillover effect is individuals moving away from the treatment area after a center’s opening, re-settling in the control group region and thus increasing the rental prices there.

Figure 1: Asylum Centers and their Neighborhoods



Notes: The figure shows, by way of example, the four asylum centers in the urban area of Lausanne with the radii for the respective treatment and control groups. Underlying map provided by <https://www.swisstopo.admin.ch/it/geodata/maps/smr/smr50.html>.

Imagine a house located in the intersection area of the red circle and the orange circle, respectively, of two different centers A and B. Center A is closer to the housing unit than center B (by definition). If we observe the unit when center A is still closed but center B is already open, then we would get a biased estimate considering the house as untreated while it might be affected by the fact that center B is already open.

We determine the length of the treatment (red) and spillover (orange) radii using a method proposed by Butts (2023) to estimate treatment effect decay as a function of distance non-parametrically, exploiting the partitioning-based least squares approach developed by Cattaneo, Farrell and Feng (2020). In Panel 2a of Figure 2, we show how the strongest effect is present until 709 meters from the centers. Then it attenuates from 710 to 1,110 meters, to become even smaller between 1,110 and 1,425 meters. We choose as the baseline spillover ring the 710–1,110 meter band, in order to avoid losing too many observations, but as can be noticed in column (2) of Panel 2b, results are robust if we drop also the 1,110–1,425 meter band.

1.2 Data

1.2.1 Asylum Centers and Surrounding Housing

Upon their arrival in Switzerland, asylum seekers are required to register at one of seven federal registration centers located at the main border crossings and airports, where identity checks and first interviews take place. There, asylum seekers are assigned to one of the twenty-six cantons according to an exogenous allocation scheme based on population size (see discussion in Couttenier et al., 2019). The cantonal authorities are then responsible for

the distribution of asylum seekers among municipalities, and they decide on the opening of new centers and where to locate them.

We obtained non-publicly available data on asylum-seeker hosting centers from 13 cantonal authorities or, in some cases, from private bodies mandated by the cantons to manage the centers.

The data include the date of opening and, where relevant, closing, the precise location, and the hosting capacity for all centers which were opened at some point in time over the 2004-2014 period. As we seek to retain those asylum centers that are plausibly salient to the local population, we consider only centers with a capacity of at least 30 beds and that stay open for at least four years within our sample period.

We draw on a database of internet advertisements for rental housing units in Switzerland over the period 2004-2014. The dataset originates from on-line publications on 26 national and regional web platforms and has been provided by meta-sys.ch, a consulting firm. Our sample consists of a repeated cross section of 157,707 housing units with an average of about 13 transactions per center neighborhood and month over our sample period. 82% of our units of observation correspond to single floor apartments, and the average annualized rent per square meter was 280 Swiss francs (CHF, with 1 CHF \approx 1 USD). Further summary statistics about housing units in the sample can be found in Table A1. Among the information available in the dataset, we rely on the publication date of the offer, the geo-coordinates of the housing unit, its rental price and its floor space. We also include dummy variables for the number of rooms and a set of 11 categories that define the type of housing unit. Throughout the analysis we take housing price to be the annualized rent, in CHF, per square meter. We match housing units to asylum centers on distance “as the crow flies” regardless of the activity status of the center.

1.2.2 Asylum Seekers

We have access to non-publicly available individual-level administrative data for all asylum seekers arriving in Switzerland during our sample period (see Couttenier et al., 2019). We match this information to hosting centers, based on the address and time. In this way we are able to retrieve the nationality of origin and the stated religion of individuals living in each hosting center at any given time. These data also allow us to construct shares of different types of asylum center populations, based on nationality and religion.

As an additional variable to characterize asylum center populations, we consider the average genetic distance between nationalities, as constructed by Spolaore and Wacziarg (2018). Given that phenotype and genotype are imperfectly correlated, this offers an alternative measure of “otherness”. We retain the genetic distance of asylum seekers living in the centers with respect to Swiss population and compute the time-varying weighted average of genetic distance for every asylum center. Furthermore, we compute a time-invariant measure of *bilateral* genetic distance, taking into account the (time averaged) nationalities of host municipality and asylum center populations.⁶

⁶More precisely, we construct the weighted sum of the genetic distances among all nationalities present in the municipality and all nationalities present in the center. The weights are given by the product of time-averaged nationality shares in the local population and among center residents.

1.2.3 Crime Data

We also have access to non-publicly available data on all crimes detected by the police in Switzerland between 2009 and 2014 (see Couttenier et al., 2019). The data include precise information about perpetrators' nationality and residence status. We exploit this information to distinguish crimes committed by asylum seekers and build a measure of "crime propensity" by nationality. The measure is constructed by dividing the total number of crimes committed by asylum seekers of a given nationality over the total number of asylum seekers from that nationality living in Switzerland. We then build a center-level measure of crime propensity, by taking a weighted average of national crime propensities of individuals from different countries present in a center on a given day. We validate this measure in Appendix Table A3, which confirms that it is effectively correlated with the municipality-month-level number of crimes committed by asylum seekers.

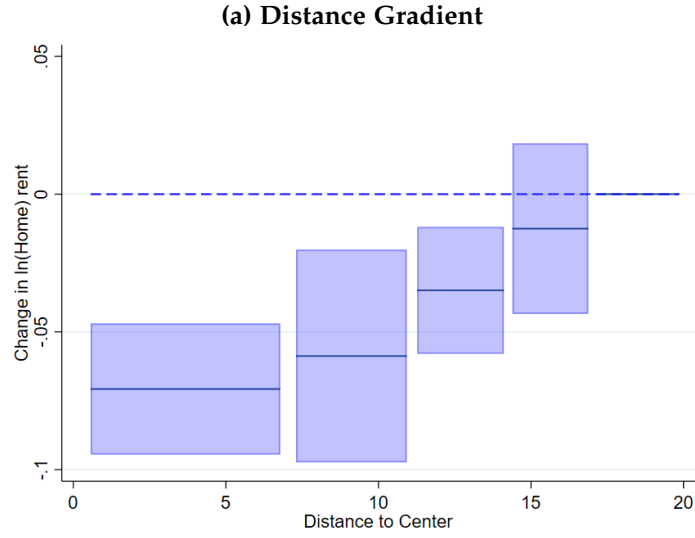
2 Results

Figure 2 presents our baseline estimates of equation (1). Panel 2a illustrates non-parametric estimates of treatment effects in five bins with an equal number of observations.⁷ It is apparent that the effect of an open asylum center on housing rents is negative in the immediate vicinity and dissipates with distance. We take this evidence to guide our baseline choice of radii to define our treatment and control groups, defining as the treatment group all housing units within a 709 meter radius of a given center and as the control group all housing units with the corresponding 1,110–2,000 meter distance band.

In Panel 2b we show difference-in-differences estimates of the price effects for varying radii. Column (1) applies our baseline definition of treated, spillover and control groups. According to our baseline estimate, the opening of an asylum center reduces average rental prices in the vicinity by 3.8 percent. Columns (2)-(4) show that this estimate is robust to changing the definition of the treatment and spillover groups. In column (2), we increase the spillover radius to 1,425 meters. Doing so we exclude from the sample also all those observations which are in the third bin (from left to right) in Panel 2a. Finally, in columns (3)-(4) we show that the result does not significantly change when we apply round distance cutoffs at 500, 1,000 and 1,500 meters. Decreasing the treatment radius from 709 to 500 meters results in a somewhat larger coefficient of -5.1 percent (column 3), which is however not statistically significantly different from our baseline estimate.

⁷Specifically, we follow the approach developed by Butts (2023), splitting the sample into distance quantiles following Cattaneo et al. (2020). The effect is then estimated non parametrically within each bin, comparing units pre and post treatment. The estimated effect from the most distant bin of observations is then subtracted from the others by way of normalization.

Figure 2: Average Effect on Rental Prices of Asylum Centers



(b) Baseline Estimates

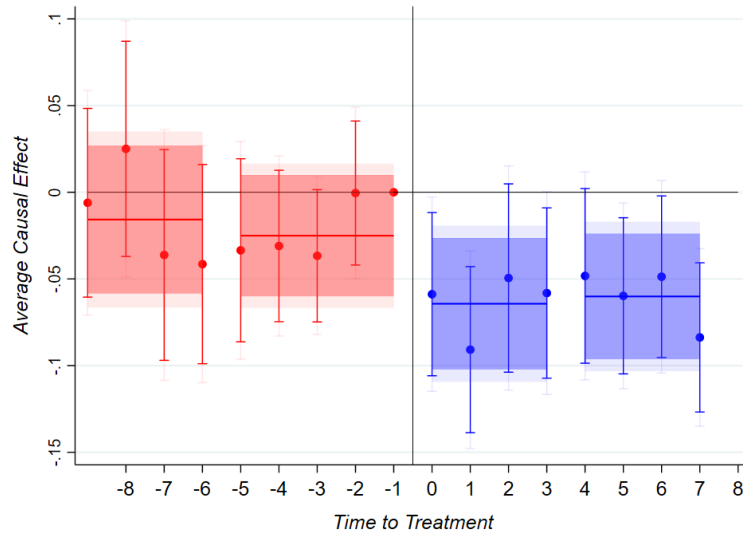
	(1)	(2)	(3)	(4)
<i>Dep. variable</i>	ln(Rent)	ln(Rent)	ln(Rent)	ln(Rent)
<i>Radii in meters:</i>	<i>baseline</i>			
<i>treatment; spillover</i>	709; 1,110	709; 1,425	500; 1,000	500; 1,500
ActiveXDist	-0.0383*** (0.0124)	-0.0299** (0.0115)	-0.0508*** (0.0174)	-0.0428** (0.0183)
Observations	154,707	106,833	152,730	78,273
R^2	0.453	0.446	0.456	0.449

Notes: In Panel (a), we plot the non-parametric estimates of the treatment effect as a function of distance, following Butts (2023). In Panel (b), we report the estimated coefficient β from equation (1). The unit of observation is a housing unit advert h published on day t . The sample covers observations within 2 kilometers of an asylum center that was open for at least four years within the period 2004-2014 and had a hosting capacity of at least 30. In each column we control for a set of housing characteristics (described in Section 1.2.1), year and municipality fixed effects, as well as the vectors $Center_c \times Active_{ct}$ and $Center_c \times Dist_{hc}$ in accordance with equation (1). Clustered standard errors by municipality are reported in parentheses. Statistical significance is represented by * $p < 0.10$, ** $p < 0.05$, *** $p < 0.01$.

The difference-in-differences estimates presented in Figure 2 examine rental prices over the pre- versus post-opening periods. Taking an event-study approach, we can study the time profile of price changes and test for pre-trends. In particular, given the structure of our dataset with some centers closing and re-opening over time, we use the methodology developed in De Chaisemartin and D’Haultfoeuille (2022).⁸ We consider quarterly time intervals two years prior to and two years after the opening of asylum centers, focusing on the baseline treatment and control definitions. Those estimates are shown in Figure 3.

⁸As far as we know, among the estimation methods recently developed (see Borusyak et al., 2021, Callaway and Sant’Anna, 2021, and Sun and Abraham, 2021) to estimate leads and lags of treatment effects, correcting the potential bias due to negative weights, this is the only one allowing for a setting where the treatment can switch on and off over time.

Figure 3: Time Pattern of Rental Prices Around the Opening of Asylum Centers



Notes: The figure displays the event-study estimates of the main effect $Active \times Distance$, at quarterly frequency for two years prior and two years after the opening of an asylum center. The estimates are computed using the approach proposed by De Chaisemartin and D’Haultfoeuille (2022).

While the price series are somewhat volatile, the negative effect of center openings on rental prices in the immediate neighborhood again emerges clearly. Interestingly, that effect appears already in the first quarter subsequent to the opening of a center. This suggests that the rental price effect of asylum centers does not build up gradually, as the practical impacts of a center’s presence get noted in the neighborhood, but happens immediately upon the activation of a center. We do not find statistically significant evidence of any pre-trends in local rental prices, which supports the interpretation of our estimates as causal effects of asylum centers on rental prices.

Next, we add interaction effects to our difference-in-differences regressions in order to explore whether different asylum center populations generate different rental price effects. We consider two types of heterogeneity. One approach is to consider the “crime propensity” of asylum seekers, as described in Section 1.2.3. We take this as a variable that could proxy for statistical discrimination, whereby rental price movements might reflect observed or latent changes in local crime risks due to the presence of asylum seekers. Our alternative approach is to consider simple socio-ethnic distinctions: religion, average genetic distance from Swiss natives, and skin color. We take such variables as potential proxies for prejudice (sometimes also referred to as animus or taste-based discrimination).

We present the main results in Table 1, with complementary estimates shown in Appendix Table A6. When we interact the baseline effect with a dummy variable set to one for centers whose populations at a given time have above-median inferred crime propensity, we find only a borderline significant negative effect. The total effect obtained the summing the double and triple interactions of $Crime$ is not statistically different from zero. We detect a considerably larger and more precisely estimated difference when we split asylum centers into those with above-median and below-median shares of residents of Sub-Saharan African nationality.

According to the estimates of column (3) in Table 1, the opening of a “low-African” center reduces local rental prices by 2.7 percent, but that of a “high-African” center reduces them by 4.8 percent. When we consider both interactions jointly (column 4 of Table 1), the interaction with *Crime* is insignificant while that with *African* remains statistically significant and quantitatively large. As we show in Appendix Table A6, religion, defined as the share of center residents who self-declare as Muslim, does not appear to drive differences in rental-price responses. Genetic distance relative to Swiss natives, however, has a similarly strong effect as that of the share of Sub-Saharan Africans – which is not surprising, given that the two variables have a correlation coefficient of 0.90. Overall, our estimates suggest that the skin color of center residents is the main source of heterogeneous rental price responses, consistent with racial prejudice rather than statistical discrimination.⁹

Table 1: Socio-Ethnic Differences in Center Populations

	(1)	(2)	(3)	(4)
<i>Dep. Variable</i>	ln(Rent)	ln(Rent)	ln(Rent)	ln(Rent)
<i>Effect</i>	Base	Crime	African	African & Crime
ActiveXDist	-0.0383*** (0.0124)	-0.0314** (0.0129)	-0.0266** (0.0107)	-0.0239** (0.0108)
ActiveXCrime		0.0067 (0.0045)		0.0065 (0.0051)
ActiveXDistXCrime		-0.0107* (0.0057)		-0.0058 (0.0059)
ActiveXAfrican			0.0008 (0.0084)	-0.0006 (0.0083)
ActiveXDistXAfrican			-0.0221*** (0.0049)	-0.0203*** (0.0059)
Observations	154,707	154,707	154,707	154,707
R^2	0.453	0.453	0.453	0.453

Notes: The table reports estimated coefficients β from equation (1) as well as interaction effects with socio-demographic variables representing the inferred crime propensity of a center’s population (*Crime*) and the average share of Sub-Saharan Africans in a given center (*African*). The unit of observation is a housing unit advert h published on day t . The sample covers observations within 2 kilometers of an asylum center that was open for at least four years within the period 2004-2014 and had a hosting capacity of at least 30. In each column we control for a set of housing characteristics (described in Section 1.2.1), year and municipality fixed effects as well as the vectors $Center_c \times Active_{ct}$ and $Center_c \times Dist_{hc}$ in accordance with equation (1). Clustered standard errors by municipality are reported in parentheses. Statistical significance is represented by * $p < 0.10$, ** $p < 0.05$, *** $p < 0.01$.

Finally, we investigate whether rental market price effects differ across localities with different characteristics. We split the sample by the median across municipalities of one of two variables: the average education level of the local municipality’s population, and bilateral genetic distance between local and center populations. As these characteristics are available only at the level of municipalities, we assign to the housing units within 2km from

⁹Note that in our data Sub-Saharan origin and crime propensity do not correlate. In fact, the crime propensity of asylum seekers from Sub-Saharan Africa is one-third lower than the crime propensity of non-Sub-Saharan asylum seekers. This difference, however, is not statistically significant (p -value = 0.34).

a center the characteristics pertaining to the municipality where the center itself is located. The education variable can serve to proxy for the “education hypothesis”, whereby ethnic and national prejudice diminishes with exposure to formal education (see, e.g., Dustmann and Preston, 2007; Hainmueller and Hiscox, 2007). Similarly, if rental prices respond more sensitively to the opening of an asylum center in municipalities where the local population is more dissimilar from asylum seekers hosted in the center, this could be (loosely) interpreted as consistent with the “contact hypothesis” (see, e.g., Allport, Clark and Pettigrew, 1954; Pettigrew and Tropp, 2006; Rohner, Thoenig and Zilibotti, 2013; Rohner and Zhuravskaya, 2023), in the sense that areas that are already very diverse before the opening of an asylum center, are better used to interacting with immigrants of diverse national origins.¹⁰

Results are shown in Table 2.

Table 2: Differences in the Composition of Local Resident Populations

	(1)	(2)	(3)	(4)
<i>Dep. Variable</i>	ln(Rent)	ln(Rent)	ln(Rent)	ln(Rent)
<i>Sample</i>	Educ H	Educ L	Gendist H	Gendist L
ActiveXDist	-0.0300** (0.0128)	-0.0519*** (0.0193)	-0.0450** (0.0173)	-0.0332 (0.0201)
Observations	79,581	74,866	80,636	73,812
R^2	0.330	0.429	0.429	0.479
t -test (p)		0.345		0.684

Notes: The table reports estimated coefficients β_1 from equation (1). The unit of observation is a housing unit advert h published on day t . The sample covers observations within 2 kilometers of an asylum center that was open for at least four years within the period 2004-2014 and had a hosting capacity of at least 30. We split the total sample by two municipal characteristics: education (defined as the share of residents with either a university degree or a higher professional qualification (“*école professionnelle supérieure*”), and the share of foreign nationals. In even-numbered (odd-numbered) columns, the sample is composed of observations in municipalities with below-median (above-median) values of the given municipal characteristic. In each column we control for a set of housing characteristics (described in Section 1.2.1), year and municipality fixed effects as well as the vectors $Center_c \times Active_{ct}$ and $Center_c \times Dist_{hc}$ in accordance with equation (1). In the bottom row of the table, we report p -values of two sided t -tests for the equality of the double interaction $Active \times Dist$. Clustered standard errors by municipality are reported in parentheses. Statistical significance is represented by * $p < 0.10$, ** $p < 0.05$, *** $p < 0.01$.

Consistent with the education hypothesis, we find that rental prices in municipalities with above-median educational attainment react somewhat less strongly to asylum centers than those in municipalities with below-median educational attainment (acolumns 1 and 2), although the difference is not statistically significant. When we split the sample according to bilateral genetic distance (columns 3 and 4), rental prices seem to respond slightly more sensitively to the opening of an asylum center in municipalities where the local population is more dissimilar from asylum seekers hosted in the center, in line with the (loosely defined) contact hypothesis. This difference, however, is not statistically significant either.

¹⁰Note that this corresponds to a broad interpretation of the contact hypothesis, since in its narrow definition this hypothesis only applies to contact between specific groups. Put differently, in the standard formulation of the contact hypothesis, more contact between people from, say, Switzerland and Senegal would not affect Swiss attitudes towards people from a third country, say, Mali. Also in the game-theoretic micro foundations of Rohner et al., 2013, the trust building effect of peaceful interaction is confined to matching between two specific groups, and does not give rise of generalized open-mindedness towards other groups.

3 Summary and Discussion

Does individual-level ethnic prejudice affect aggregate market outcomes, or are such biases arbitrated away? To answer this question, we investigate equilibrium prices in a setting featuring the likely presence of prejudiced agents: real estate transactions in the neighborhood of asylum seeker hosting centers.

We employ difference-in-differences estimation of rental housing prices, exploiting the quasi-random allocation of asylum seekers across centers in Switzerland. Market rents of housing units within 0.7km of an active center are found on average to be 3.8% lower than market rents in the control group, for at least two years (the length of our observation window in the event-study analysis). Arbitrage by non-prejudiced agents is therefore partial at best.

The price drop varies markedly with the share of asylum seekers of Sub-Saharan African origin: in the vicinity of centers with below-median Sub-Saharan African shares, the price effect is -2.7%, but for centers with above-median shares, that effect is -4.8%. In contrast, we find no statistically significant effect heterogeneity with respect to inferred crime propensity or religious affiliation of asylum seekers. Those findings are consistent with racial animus as the dominant driver of the observed market outcomes. We also find suggestive evidence consistent with the education and contact hypotheses: the estimated rental price effect of center opening is somewhat stronger in municipalities where local population is less educated and more diverse in terms of genetic distance from asylum seekers hosted in the center.

How large are these effects? Our estimate of the impact of an asylum center is quantitatively comparable to what is typically found in the hedonic pricing literature regarding the impact of perceived criminality at the local level (e.g. presence of sex offenders, narcotics labs).¹¹ When compared to housing-market reactions to other types of exposures, the opening of an asylum center has a larger impact than the one caused by airport noise but is only about a quarter as large as that due to shale gas extraction sites at a comparable distance, and one third as large as the effect of toxic plants.¹² The greater price impact of shale gas extraction and toxic plants is intuitive, as they represent objective harm to the exposed populations due to environmental degradation, which is not the case for asylum housing to the extent that the price effect is driven by racial animus.

Another way of benchmarking our estimated effect is to calculate the implied equivalent (monetary) variation. In our sample, the average yearly rent per square meter is 280 CHF, and the average surface is equal to 80 sqm (see Appendix Table A1). Hence, the average drop of 3.8% in the local rental price implies that the yearly willingness to pay in order to avoid an asylum center opening nearby is estimated to be 851 CHF per year and housing unit

¹¹Linden and Rockoff (2008) estimate a reduction in house prices of 4% within 170m from the known home of a sex offender, while Pope (2008b) finds an impact of 2.3%. Dealy, Horn and Berrens (2017) find a drop in house prices of 6.48% when a methamphetamine lab is discovered within 170m from a housing unit, while Liang and Alexeev (2022) find a reduction in house prices of 5% within 800m from a facility for the safe injection of illicit drugs. These are similar magnitudes to what we find. Note, however, that most of those studies consider more localized effects (treatment radius of about 170m), while the impact we find affects a broader area making the effect more relevant in aggregate terms.

¹²Pope (2008a) finds a drop in house prices affected by airport noise of 2.9%. Muehlenbachs, Spiller and Timmins (2015) estimate a negative effect on house prices of 16% within 1km of a shale gas extraction site for housing units whose water gets polluted from the extraction process. Currie et al. (2015) estimate a decrease in house prices of 11% for properties located within 800m of industrial plants that emit toxic pollutants.

($=0.038 \times 280 \times 80$), or some 0.7% of average gross household income (SFSO, 2011).

We can cross-validate this estimate against an external data source by considering the case of the Swiss municipality of Oberwil-Lieli (population $\approx 2,300$), where in 2016 a majority of citizens voted in favour of collectively paying a fine of 110 CHF per day and person for not hosting asylum seekers assigned to their municipality by the allocation rule. A back-of-the-envelope calculation shows that the willingness to pay as elicited by this vote is actually comparable to the one based on our empirical analysis of housing-market price responses.¹³

An important general lesson from the current paper is that there is a “price of prejudice”. Similar to the well-known result of Dal Bó and Dal Bó (2011) that criminal and appropriate activities make everybody worse off, including the criminal, taste-based discrimination imposes costs not only on the objects of prejudice but also on the subjects, as shown in our computations of willingness to pay. This means that policies promoting tolerance and open-mindedness are win-win and feature a double dividend – for both victims and discriminators. A growing literature studies how inter-group tolerance can be fostered, drawing on the theoretical premises of the contact hypothesis, according to which more frequent (fair and peaceful) interactions with people of different ethnic and national background reduce prejudice (see, e.g., Allport et al., 1954; Pettigrew and Tropp, 2006; Rohner et al., 2013; Rohner and Zhuravskaya, 2023). Recent empirical evidence from national (military) service (Samii, 2013; Okunogbe, 2018; Cáceres-Delpiano, De Moragas, Facchini and González, 2021), soccer (Mousa, 2020; Alrababa’h, Marble, Mousa and Siegel, 2021) or reconciliation ceremonies (Cilliers, Dube and Siddiqi, 2016) show that inter-group interaction can foster inter-group trust and reduce tensions. A promising avenue for future research would be to explore the effect of inter-group interaction on racial animus towards asylum seekers more closely.

¹³The minimum hosting capacity of asylum centers considered in our study is 30 beds. Hence, for preventing the opening of such an asylum center, the citizens of Oberwil-Lieli would be ready to pay 1,204,500 CHF per year ($= 110 \times 30 \times 365$). For a population of some 2,300, this translates into 524 CHF per citizen per year. The representative housing unit in Switzerland hosts 2.2 individuals (SFSO, 2023); hence we obtain a willingness to pay of 1,152 CHF per year and housing unit. If instead we take the the mean center capacity of 95 (see Table A2 Panel A), this amount even increases to 3,648 CHF per year and housing unit. Such an extrapolation is probably unrealistic, given that the actual number of asylum seekers assigned to that municipality was 10. Moreover, Oberwil-Lieli is a rural and politically conservative place. Nonetheless, the outcome of that uniquely informative local referendum suggests that our estimated willingness to pay of 851 CHF per year and housing unit is not implausibly high.

References

- Abbott, A. (2016), 'The troubled minds of migrants', *Nature* **538**(7624), 158–160.
- Agan, A. and Starr, S. (2018), 'Ban the box, criminal records, and racial discrimination: A field experiment', *The Quarterly Journal of Economics* **133**(1), 191–235.
- Allport, G. W., Clark, K. and Pettigrew, T. (1954), *The Nature of Prejudice*, Addison-Wesley, Reading, MA.
- Alrababa'h, A., Marble, W., Mousa, S. and Siegel, A. (2021), 'Can exposure to celebrities reduce prejudice? The effect of Mohamed Salah on islamophobic behaviors and attitudes', *American Political Science Review* **115**(4), 1111–1128.
- Bansak, K., Hainmueller, J. and Hangartner, D. (2016), 'How economic, humanitarian, and religious concerns shape European attitudes toward asylum seekers', *Science* **354**(6309), 217–222.
- Barone, G., D'Ignazio, A., De Blasio, G. and Naticchioni, P. (2016), 'Mr. Rossi, Mr. Hu and politics. The role of immigration in shaping natives' voting behavior', *Journal of Public Economics* **136**, 1–13.
- Becker, G. S. (1957), *The Economics of Discrimination*, University of Chicago Press.
- Bell, B., Fasani, F. and Machin, S. (2013), 'Crime and immigration: Evidence from large immigrant waves', *Review of Economics and Statistics* **95**(4), 1278–1290.
- Besley, T. and Mueller, H. (2012), 'Estimating the peace dividend: The impact of violence on house prices in Northern Ireland', *American Economic Review* **102**(2), 810–33.
- Bianchi, M., Buonanno, P. and Pinotti, P. (2012), 'Do immigrants cause crime?', *Journal of the European Economic Association* **10**(6), 1318–1347.
- Black, D. A. (1995), 'Discrimination in an equilibrium search model', *Journal of Labor Economics* **13**(2), 309–334.
- Blinder, S. and Richards, L. (2016), 'UK public opinion toward immigration: Overall attitudes and level of concern', *Migration Observatory briefing, COMPAS, University of Oxford* .
- Borusyak, K., Jaravel, X. and Spiess, J. (2021), 'Revisiting event study designs: Robust and efficient estimation', *arXiv preprint arXiv:2108.12419* .
- Brenan, M. (2022), 'Government remains Americans' top problem in 2022', *Gallup* (<https://news.gallup.com/poll/406739/government-remains-americans-top-problem-2022.aspx>, accessed 1/30/2023) .
- Butts, K. (2023), 'Difference-in-differences with geocoded microdata', *Journal of Urban Economics: Insights* (in press).
- Cáceres-Delpiano, J., De Moragas, A.-I., Facchini, G. and González, I. (2021), 'Intergroup contact and nation building: Evidence from military service in Spain', *Journal of Public Economics* **201**, 104477.
- Callaway, B. and Sant'Anna, P. H. (2021), 'Difference-in-differences with multiple time periods', *Journal of Econometrics* **225**(2), 200–230.
- Cattaneo, M. D., Farrell, M. H. and Feng, Y. (2020), 'Large sample properties of partitioning-based series estimators', *The Annals of Statistics* **48**(3), 1718–1741.

- Cengiz, D., Dube, A., Lindner, A. and Zipperer, B. (2019), 'The effect of minimum wages on low-wage jobs', *The Quarterly Journal of Economics* **134**(3), 1405–1454.
- Chay, K. Y. and Greenstone, M. (2005), 'Does air quality matter? Evidence from the housing market', *Journal of Political Economy* **113**(2), 376–424.
- Cilliers, J., Dube, O. and Siddiqi, B. (2016), 'Reconciling after civil conflict increases social capital but decreases individual well-being', *Science* **352**(6287), 787–794.
- Collins, W. J. and Margo, R. A. (2007), 'The economic aftermath of the 1960s riots in American cities: Evidence from property values', *The Journal of Economic History* **67**(4), 849–883.
- Congdon-Hohman, J. M. (2013), 'The lasting effects of crime: The relationship of discovered methamphetamine laboratories and home values', *Regional Science and Urban Economics* **43**(1), 31–41.
- Couttenier, M., Petrencu, V., Rohner, D. and Thoenig, M. (2019), 'The violent legacy of conflict: evidence on asylum seekers, crime, and public policy in Switzerland', *American Economic Review* **109**(12), 4378–4425.
- Currie, J., Davis, L., Greenstone, M. and Walker, R. (2015), 'Environmental health risks and housing values: evidence from 1,600 toxic plant openings and closings', *American Economic Review* **105**(2), 678–709.
- Daams, M. N., Proietti, P. and Veneri, P. (2019), 'The effect of asylum seeker reception centers on nearby house prices: Evidence from the netherlands', *Journal of Housing Economics* **46**, 101658.
- Dal Bó, E. and Dal Bó, P. (2011), 'Workers, warriors, and criminals: social conflict in general equilibrium', *Journal of the European Economic Association* **9**(4), 646–677.
- De Chaisemartin, C. and D'Haultfoeuille, X. (2022), Difference-in-differences estimators of intertemporal treatment effects, Technical report, National Bureau of Economic Research.
- Dealy, B. C., Horn, B. P. and Berrens, R. P. (2017), 'The impact of clandestine methamphetamine labs on property values: Discovery, decontamination and stigma', *Journal of Urban Economics* **99**, 161–172.
- Deshpande, M. and Li, Y. (2019), 'Who is screened out? Application costs and the targeting of disability programs', *American Economic Journal: Economic Policy* **11**(4), 213–48.
- Dustmann, C. and Preston, I. P. (2007), 'Racial and economic factors in attitudes to immigration', *The BE Journal of Economic Analysis & Policy* **7**(1).
- Dustmann, C., Vasiljeva, K. and Piil Damm, A. (2019), 'Refugee migration and electoral outcomes', *The Review of Economic Studies* **86**(5), 2035–2091.
- Eberle, U. J., Henderson, J. V., Rohner, D. and Schmidheiny, K. (2020), 'Ethnolinguistic diversity and urban agglomeration', *Proceedings of the National Academy of Sciences* **117**(28), 16250–16257.
- Eurobarometer (2019), 'Standard Eurobarometer: Immigration and climate change remain main concerns at EU level', European Commission Press Release, Dec. 2019.
- Ewens, M., Tomlin, B. and Wang, L. C. (2014), 'Statistical discrimination or prejudice? a large sample field experiment', *Review of Economics and Statistics* **96**(1), 119–134.

- Goodman-Bacon, A. (2021), 'Difference-in-differences with variation in treatment timing', *Journal of Econometrics* **225**(2), 254–277.
- Hainmueller, J. and Hangartner, D. (2013), 'Who gets a Swiss passport? a natural experiment in immigrant discrimination', *American Political Science Review* **107**(1), 159–187.
- Hainmueller, J., Hangartner, D. and Lawrence, D. (2016), 'When lives are put on hold: Lengthy asylum processes decrease employment among refugees', *Science Advances* **2**(8).
- Hainmueller, J. and Hiscox, M. J. (2007), 'Educated preferences: Explaining attitudes toward immigration in Europe', *International Organization* **61**(2), 399–442.
- Hangartner, D., Kopp, D. and Siegenthaler, M. (2021), 'Monitoring hiring discrimination through online recruitment platforms', *Nature* **589**(7843), 572–576.
- Heckman, J. J. (1998), 'Detecting discrimination', *Journal of Economic Perspectives* **12**(2), 101–116.
- Hedegaard, M. S. and Tyran, J.-R. (2018), 'The price of prejudice', *American Economic Journal: Applied Economics* **10**(1), 40–63.
- Laban, C. J., Gernaat, H. B., Komproe, I. H., Schreuders, B. A. and De Jong, J. T. (2004), 'Impact of a long asylum procedure on the prevalence of psychiatric disorders in Iraqi asylum seekers in the Netherlands', *The Journal of Nervous and Mental Disease* **192**(12), 843–851.
- Lang, K. and Kahn-Lang Spitzer, A. (2020), 'Race discrimination: An economic perspective', *Journal of Economic Perspectives* **34**(2), 68–89.
- Lang, K. and Lehmann, J.-Y. K. (2012), 'Racial discrimination in the labor market: Theory and empirics', *Journal of Economic Literature* **50**(4), 959–1006.
- Laouénan, M. and Rathelot, R. (2022), 'Can information reduce ethnic discrimination? evidence from Airbnb', *American Economic Journal: Applied Economics* **14**(1), 107–32.
- Liang, J. and Alexeev, S. (2022), 'Harm reduction or amplification? the adverse impact of a supervised injection room on housing prices', *Regional Science and Urban Economics* p. 103856.
- Linden, L. and Rockoff, J. E. (2008), 'Estimates of the impact of crime risk on property values from Megan's Laws', *American Economic Review* **98**(3), 1103–1127.
- Mousa, S. (2020), 'Building social cohesion between Christians and Muslims through soccer in post-ISIS Iraq', *Science* **369**(6505), 866–870.
- Muehlenbachs, L., Spiller, E. and Timmins, C. (2015), 'The housing market impacts of shale gas development', *American Economic Review* **105**(12), 3633–59.
- Myohl, N. and Stadelmann, S. (2020), 'You say hello and I say goodbye? Natives' reactions to openings of asylum centers', Working Paper, University of St. Gallen.
- Neumark, D. (2018), 'Experimental research on labor market discrimination', *Journal of Economic Literature* **56**(3), 799–866.
- Okunogbe, O. M. (2018), 'Does exposure to other ethnic regions promote national integration?: Evidence from Nigeria', *World Bank Policy Research Working Paper* (8606).
- Otto, A. H. and Steinhardt, M. F. (2014), 'Immigration and election outcomes—evidence from city districts in Hamburg', *Regional Science and Urban Economics* **45**, 67–79.

- Pettigrew, T. F. and Tropp, L. R. (2006), 'A meta-analytic test of intergroup contact theory.', *Journal of Personality and Social Psychology* **90**(5), 751.
- Pope, D. G. and Pope, J. C. (2015), 'When Walmart comes to town: Always low housing prices? always?', *Journal of Urban Economics* **87**, 1–13.
- Pope, J. C. (2008a), 'Buyer information and the hedonic: The impact of a seller disclosure on the implicit price for airport noise', *Journal of Urban Economics* **63**(2), 498–516.
- Pope, J. C. (2008b), 'Fear of crime and housing prices: Household reactions to sex offender registries', *Journal of Urban Economics* **64**(3), 601–614.
- Rohner, D., Thoenig, M. and Zilibotti, F. (2013), 'War signals: A theory of trade, trust, and conflict', *Review of Economic Studies* **80**(3), 1114–1147.
- Rohner, D. and Zhuravskaya, E. (2023), 'Nation building: Big lessons from successes and failures'.
- Rosen, K. T. and Smith, L. B. (1983), 'The price-adjustment process for rental housing and the natural vacancy rate', *American Economic Review* **73**(4), 779–786.
- Samii, C. (2013), 'Perils or promise of ethnic integration? evidence from a hard case in burundi', *American Political Science Review* **107**(3), 558–573.
- SFSO (2011), 'Haushaltbudgeterhebung 2009 (survey of household finances)', Swiss Federal Statistical Office.
- SFSO (2023), 'Number of occupants per dwelling', Swiss Federal Statistical Office. www.bfs.admin.ch/bfs/en/home/statistics/construction-housing/dwellings/housing-conditions/persons.html (accessed 02/02/2023).
- Spolaore, E. and Wacziarg, R. (2018), 'Ancestry and development: New evidence', *Journal of Applied Econometrics* **33**(5), 748–762.
- Steinmayr, A. (2016), 'Exposure to refugees and voting for the far-right: (unexpected) results from Austria', IZA Discussion Paper, 9790.
- Sun, L. and Abraham, S. (2021), 'Estimating dynamic treatment effects in event studies with heterogeneous treatment effects', *Journal of Econometrics* **225**(2), 175–199.
- Van Vuuren, A., Kjellander, J. and Nilsson, V. (2019), 'Refugees and apartment prices: A case study to investigate the attitudes of home buyers', *Regional Science and Urban Economics* **77**, 20–37.
- Yinger, J. (1986), 'Measuring racial discrimination with fair housing audits: Caught in the act', *American Economic Review* pp. 881–893.
- Zimmermann, S. and Stutzer, A. (2022), 'The consequences of hosting asylum seekers for citizens' policy preferences', *European Journal of Political Economy* **73**, 102130.

A Appendix

A.1 Center Characteristics

In Table A2 Panel A, we report summary statistics for the characteristics of our sample centers. We focus on centers that are visible to the local population by being large enough and open for a sufficiently long period. We include cantonal centers that were open for at least four years, with at least 30 beds. For completeness, Table A2 Panel B reports summary statistics for the centers we excluded from the sample. These centers are much less relevant in terms of size and length of opening.¹⁴

A.2 Crime Propensity Measure: Validation

In this Appendix we validate the measure of crime propensity used as our proxy for statistical discrimination. One possible issue is that, differently from *African*, our taste-based discrimination measure that is clearly visible for the local population, residents nearby an asylum center may not really realize if asylum seekers living there are more or less crime-prone.

To verify that our crime propensity variable proxies for the number of crimes committed locally by asylum seekers, we estimate the following Poisson regression model:

$$\ln \mathbb{E}(\lambda_{ms}) = \beta_1 Active_{ms} + \beta_2 (Active_{ms} \times \ln Capacity_{ms}) + \beta_3 (Active_{ms} \times Crime_{ms}) + \mathbf{X}'_{ms} \boldsymbol{\Gamma} + \tau_m + \gamma_{y[s]} + \delta_{k[s]}. \quad (\text{A.1})$$

We report the estimates of the model in Table A3. The units of observation are municipalities, m , in which at least one asylum center of our sample is present. The dependent variable, $\ln \lambda_{ms}$, is the log number of crimes committed by asylum seekers (odd columns) or by the total population (even columns) in each municipality and month (s). The time span is determined by the availability of crime data (2009-2014). The variable $Active_{ms}$ takes the value of 1 if at least one center is active in municipality m and month s . The variable $Capacity_{ms}$ corresponds to the total installed capacity in the centers opened in municipality m during month s . The variable $Crime_{ms}$ takes the value of 1 if the asylum seekers' crime propensity in the center in municipality m during month s is higher than the median value in the sample. In the vector \mathbf{X}_{ms} we gather other controls such as the natural logarithm of population in municipality m at time s and the interaction between center activity and the high African presence dummy, $Active \times African$, which we control for in columns (5) to (8) of Table A3. τ_m is a municipality fixed effect, $\gamma_{y[s]}$ is a year fixed effect, and $\delta_{k[s]}$ is a calendar-month fixed effect (to filter out potential seasonality in criminal activity).

Our main coefficients of interest is β_3 , which captures the effect of having crime-prone asylum seekers hosted in the center(s) located in a given municipality. The coefficient is positive and statistically significant only when we have as dependent variable the number of crimes perpetrated by asylum seekers. This confirms that our measure of crime propensity

¹⁴In the first row of Table A2 Panel B we report the summary statistics of the capacity for the centers excluded because of capacity reasons while in the second row we display summary statistics about length of opening for those centers excluded because they remained open for a too short time period.

is a good proxy for statistical discrimination. Yet, one can notice that high presence of Sub-Saharan African individuals does not have any statistically significant effect on overall local crime.

A.3 Stacked Regression

As an alternative to our main specification (equation 1), in order to ease potential concerns that negative weights may affect and bias our main results, we replicate Figure 2 (Panel B) and Table 1 estimates using a stacked difference-in-differences approach (see Cengiz, Dube, Lindner and Zipperer 2019, and Deshpande and Li 2019). Even if with the fixed effect structure in equation 1 we compare housing units within each center, for those centers that open and close multiple times in our sample period (9 out of 91) we have the treatment event of opening happening at different points in time. This might bias our estimates in the case treatment effects are heterogeneous over time.¹⁵ More precisely, the model we use is:

$$\begin{aligned} \ln(Rent)_{hemt} = & \tilde{\alpha} + \tilde{\beta}(Active_{et} \times Dist_{he}) + \mathbf{H}'_h \mathbf{\Gamma} + \tilde{\theta}_e(Event_e \times Active_{et}) \\ & + \tilde{\delta}_e(Event_e \times Dist_{he}) + \tilde{\tau}_{y[t]} + \tilde{\gamma}_m + \tilde{\varepsilon}_{hemt}. \end{aligned} \quad (\text{A.2})$$

The difference between equation 1 and A.2 is that in the latter we define an event e as the opening of a center and we include an event-specific fixed effects structure. In this way, for those centers opening and closing over our sample period we are implicitly defining different treatment and control groups of houses, stacking opening events and avoiding “forbidden comparisons” between already treated and newly treated housing units. For those centers which open (close) one time during our sample period, the units of observations’ assignment to the event (opening or closing) coincides with the one of our main specification equation (1). In contrast, for those centers opening and closing multiple times we firstly define each opening (closure) as an event and then assign housing units to each event according to a criterion based on time proximity.¹⁶ As one can observe from Tables A4 and A5, our results are very similar following this alternative approach.

¹⁵See e.g. Goodman-Bacon (2021) explaining the source of the bias due to the comparison of already treated with newly treated units in difference-in-differences regressions.

¹⁶More precisely, we compute the time between two consecutive events related to a given center, and we assign all housing units observed within the first half of this spell to the first event and all units observed in the second half of the spell to the second event.

A.4 Supplementary Tables

Table A1: Descriptive Statistics: Housing Units

Variable	Mean	Std. Dev.	Min.	Max.	N
Yearly rent per sqm (CHF)	279.705	93.992	15.701	2620	154,707
Surface (sqm)	80.192	36.957	11	1125	154,707
Standard (single-floor apartment)	0.820	0.384	0	1	154,707
Duplex	0.063	0.242	0	1	154,707
Attic	0.031	0.172	0	1	154,707
Studio	0.014	0.118	0	1	154,707
Furnished apartment	0.037	0.19	0	1	154,707
Terrace-apartment	0.002	0.046	0	1	154,707
Independent house (villa)	0.023	0.15	0	1	154,707
Row house	0.006	0.076	0	1	154,707
Semi-detached house	0.003	0.052	0	1	154,707
Farm	0.001	0.033	0	1	154,707
Other type of housing unit	0.0005	0.022	0	1	154,707
Less than 2 rooms	0.131	0.338	0	1	154,707
2-2.5 rooms	0.211	0.408	0	1	154,707
3-3.5 rooms	0.323	0.468	0	1	154,707
4-4.5 rooms	0.245	0.43	0	1	154,707
5 rooms or more	0.09	0.286	0	1	154,707

Notes: The table reports summary statistics for our sample housing units. The data were obtained from the consulting firm meta-sys.ch.

Table A2: Descriptive Statistics: Asylum Centers

Variable	Mean	Std. Dev.	Min.	Max.	N
Panel A: <i>Sample Centers</i> (Capacity ≥ 30)					
Capacity	95	88	30	694	91
Duration of opening (years)	14	8	4	50	91
Panel B: <i>Other Centers</i> (Capacity < 30)					
Capacity	13.5	6.5	2	28	106
Duration of opening (years)	2.5	1	0.2	4	71

Notes: The table reports summary statistics on center capacity and length of opening separately for centers included in our sample (Panel A) and centers dropped from the sample (Panel B). The data were obtained from 13 cantonal authorities (or private bodies mandated by the cantons to manage the centers). The list of cantons is: Aargau, Geneva, Glarus, Graubünden, Jura, Neuchâtel, Schaffhausen, Solothurn, Thurgau, Ticino, Valais, Vaud and Zurich.

Table A3: Validation of Crime Propensity Measure

<i>Dep. Variable</i>	(1)	(2)	(3)	(4)	(5)	(6)	(7)	(8)
	Crime AS	Crime All	Crime AS	Crime All	Crime AS	Crime All	Crime AS	Crime All
Active	-1.956 (2.311)	-1.950 (2.101)	-2.467 (2.221)	-1.864 (1.897)	-1.718 (2.309)	-1.832 (2.091)	-2.231 (2.209)	-1.753 (1.900)
ActiveXLog Capacity	0.208 (0.502)	0.406 (0.498)	0.234 (0.505)	0.402 (0.485)	0.226 (0.500)	0.406 (0.499)	0.252 (0.503)	0.403 (0.485)
ActiveXCrime			0.521** (0.251)	-0.095 (0.228)			0.520** (0.251)	-0.092 (0.228)
ActiveXAfrican					-0.380 (0.431)	-0.180 (0.256)	-0.376 (0.405)	-0.173 (0.259)
Observations	4,184	4,184	4,184	4,184	4,184	4,184	4,184	4,184

Notes: The unit of observation is represented by municipality m in month s . The sample is composed by the 61 municipalities where at least one center is located. The dependent variable is the number of violent or property crimes committed by asylum seekers (full population) in odd (even) columns. In each column we control for the natural logarithm of population living in the municipality at yearly level as well as for municipality, year and calendar month fixed effects. Clustered standard errors by municipality are reported in parentheses. Statistical significance is represented by * $p < 0.10$, ** $p < 0.05$, *** $p < 0.01$.

Table A4: Stacked DiD: Baseline Estimates

	(1)	(2)	(3)	(4)
	Baseline	709-1,425	500-1,000	500-1,500
ActiveXDist	-0.0409*** (0.0116)	-0.0318*** (0.0107)	-0.0566*** (0.0164)	-0.0479*** (0.0162)
Observations	154,706	106,833	137,010	78,273
R^2	0.453	0.446	0.456	0.450

Notes: The unit of observation is represented by a housing unit advert h published on day t . The sample covers observations within 2km of a center location during the time interval 2004-2014. In each column we control for a set of housing characteristics (described in Section 1.2.1), year and municipality fixed effects as well as the vectors $Event_e \times Active_{et}$ and $Event_e \times Dist_{he}$ as described in equation A.2. The fixed effects structure we impose compares housing units within each event of centers' opening (closing) (stacked DiD, see Appendix A.3 for further details). Clustered standard errors by municipality are reported in parentheses. Statistical significance is represented by * $p < 0.10$, ** $p < 0.05$, *** $p < 0.01$.

Table A5: Stacked DiD: Socio-Ethnic Differences in Center Populations

	(1)	(2)	(3)	(4)
<i>Dep. Variable</i>	ln(Rent)	ln(Rent)	ln(Rent)	ln(Rent)
<i>Effect</i>	Base	Crime	African	African & Crime
ActiveXDist	-0.0409*** (0.0116)	-0.0335*** (0.0121)	-0.0282*** (0.0101)	-0.0254** (0.0102)
ActiveXCrime		0.0060 (0.0046)		0.0057 (0.0052)
ActiveXDistXCrime		-0.0115** (0.0058)		-0.0061 (0.0059)
ActiveXAfrican			0.0006 (0.0087)	-0.0006 (0.0087)
ActiveXDistXAfrican			-0.0247*** (0.0050)	-0.0227*** (0.0059)
Observations	154,706	154,706	154,706	154,706
R^2	0.453	0.453	0.453	0.453

Notes: The unit of observation is represented by a housing unit advert h published on day t . The sample covers observations within 2km of a center location during the time interval 2004-2014. In each column we control for a set of housing characteristics (described in Section 1.2.1), year and municipality fixed effects as well as the vectors $Event_e \times Active_{et}$ and $Event_e \times Dist_{he}$, as described in equation A.2. The fixed effects structure we impose compares housing units within each event of centers' opening (closing) (stacked DiD, see Appendix A.3 for further details). Clustered standard errors by municipality are reported in parentheses. Statistical significance is represented by * $p < 0.10$, ** $p < 0.05$, *** $p < 0.01$.

Table A6: Alternative Heterogeneous Variables: Muslim and Genetic Distance

<i>Dep. Variable</i>	(1) In(Rent)	(2) In(Rent)	(3) In(Rent)	(4) In(Rent)	(5) In(Rent)	(6) In(Rent)	(7) In(Rent)	(8) In(Rent)	(9) In(Rent)	(10) In(Rent)
<i>Effect</i>	Crime	Muslim	Genetic	African	Genetic-Crime	Genetic-Muslim	African-Crime	African-Muslim	Genetic-Crime-Muslim	African-Crime-Muslim
ActiveXDist	-0.0314** (0.0129)	-0.0379*** (0.0118)	-0.0279*** (0.0107)	-0.0266*** (0.0107)	-0.0254** (0.0110)	-0.0260** (0.0108)	-0.0239** (0.0108)	-0.0247** (0.0106)	-0.0233** (0.0109)	-0.0217** (0.0106)
ActiveXCrime	0.0067 (0.0045)				0.0068 (0.0049)		0.0065 (0.0051)		0.0070 (0.0049)	0.0066 (0.0052)
ActiveXDistXCrime	-0.0107* (0.0057)				-0.0053 (0.0059)		-0.0058 (0.0059)		-0.0058 (0.0057)	-0.0063 (0.0058)
ActiveXMuslim		-0.0023 (0.0054)				-0.0029 (0.0049)		-0.0024 (0.0049)	-0.0032 (0.0048)	-0.0027 (0.0048)
ActiveXDistXMuslim		-0.0011 (0.0087)				-0.0038 (0.0089)		-0.0040 (0.0084)	-0.0037 (0.0085)	-0.0039 (0.0081)
ActiveXGenetic			-0.0024 (0.0081)		-0.0038 (0.0077)	-0.0029 (0.0078)			-0.0044 (0.0075)	
ActiveXDistXGenetic			-0.0201*** (0.0053)		-0.0184*** (0.0064)	-0.0209*** (0.0061)			-0.0189*** (0.0072)	
ActiveXAfrican				0.0008 (0.0084)			-0.0006 (0.0083)	0.0003 (0.0081)		-0.0012 (0.0080)
ActiveXDistXAfrican				-0.0221*** (0.0049)			-0.0203*** (0.0059)	-0.0228*** (0.0053)		-0.0208*** (0.0063)
Observations	154,707	154,707	154,707	154,707	154,707	154,707	154,707	154,707	154,707	154,707
R ²	0.453	0.453	0.453	0.453	0.453	0.453	0.453	0.453	0.453	0.453

Notes: The unit of observation is represented by a housing unit advert h published on day t . The sample covers observations within 2km of a center location during the time interval 2004-2014. In each column we control for a set of housing characteristics (described in Section 1.2.1), year and municipality fixed effects as well as the vectors $Center_c \times Active.ct$ and $Center_c \times Dist_{h,c}$, as described in equation (1). Clustered standard errors by municipality are reported in parentheses. Statistical significance is represented by * $p < 0.10$, ** $p < 0.05$, *** $p < 0.01$.